









August 22, 2023

Wasatch Front Area Comprehensive Safety Action Plan

WELCOME!

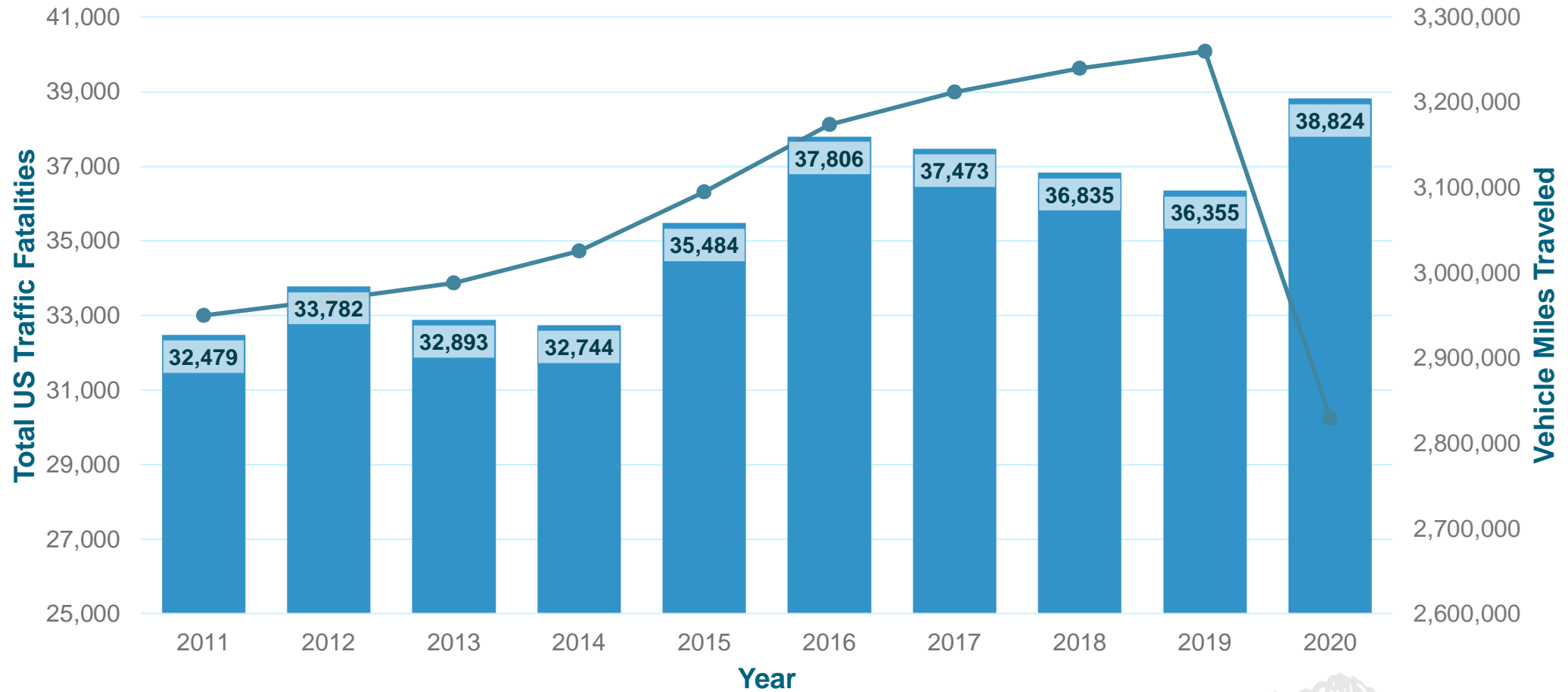


Agenda

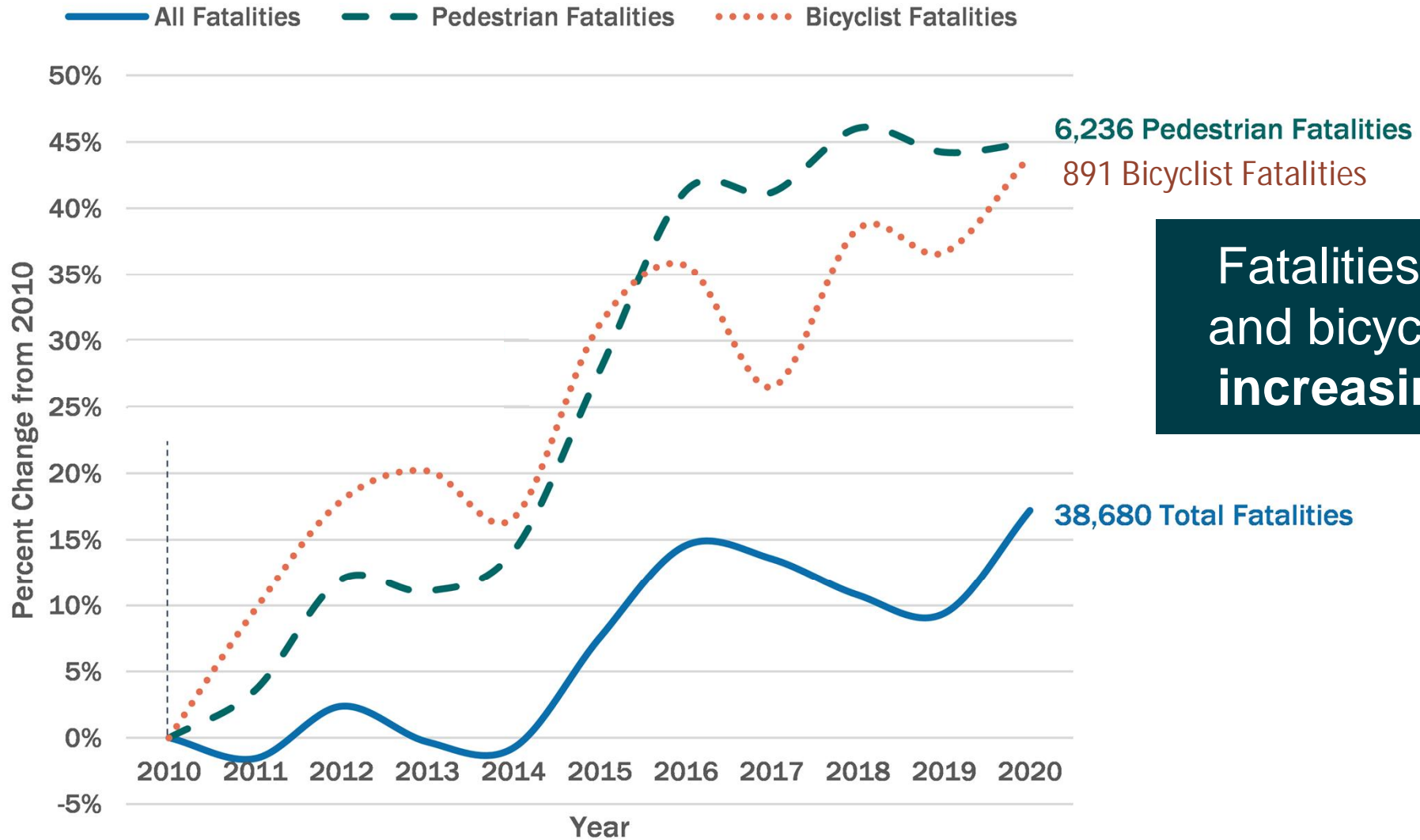
-  Project Purpose
-  Safe Streets and Roads for All (SS4A) Program
-  Comprehensive Safety Action Plan (CSAP) Overview
-  Geographic Focus Areas / Safety Planning Teams
-  What Have We Learned So Far
-  Safe System Approach

Thousands of Lives are Lost Each Year

Total US Traffic Fatalities and VMT (2011-2020)



WE HAVE A NATIONAL ROADWAY SAFETY PROBLEM



Fatalities of pedestrians and bicyclists have been increasing even faster



- Bipartisan Infrastructure Law (BIL)
 - Established the Safe Streets and Roads for All (SS4A) discretionary grant program
- **\$5 billion over 5 years (2022-2026)**
 - Planning and Demonstration Grants
 - Implementation Grants



“A plan to provide local governments the means to make strategic roadway safety improvements.”

CSAP will meet eligibility requirements that allow local jurisdictions to apply for SS4A Implementation Grant program, and serve as a resource for jurisdictions to apply



Self-Certification Checklist

Plan must include the following:

Safety Analysis

- Existing conditions and historical trends
- Crashes by location, severity, and contributing factor
- Systemic and specific safety needs
- Geospatial identification of higher risk locations

Identification of comprehensive set of projects and strategies



Self-Certification Checklist

..And must complete 4 of the 6 elements

1. Leadership Commitment

- Governing body publicly commit to a zero fatalities and serious injury goal

2. Plan Development

- Committee charged with plan development, implementation, and monitoring

3. Development Activities

- Engagement with public and relevant stakeholders

4. Equity

- Data-driven, inclusive, and representative processes

5. Policies, Plans, Guidelines, and/or Standards

- Assessment policies, plans, guidelines, and/or standards

6. Progress

- Description on how progress will be measured over time

CSAP Overview



CSAP Overview

June - Sept. 2023	Oct. 2023	Nov. 2023 - Jan 2024	Feb. 2024	May - June 2024	July 2024
Safety Launch	Geographic Focus Area Safety Planning Team Meetings #1	Strategy and Project Selection	Geographic Focus Area Safety Planning Team Meetings #2	Draft and Final CSAP	WFRC Presentations
Safety Analysis				Leadership Commitment	
	SS4A Regional Workshop				
	Safety Commitment Resolution				
Engagement and Collaboration, Committee Meetings					



Planning Structure

- **CSAP Steering Team**
 - Monthly meetings
- **Geographic Focus Area (GFA) Safety Planning Teams**
 - Two Rounds of GFA Planning Team Meetings
 - **October 2023**
 - **February 2024**
 - One meeting within each GFA (11 total meetings)
- **Region-wide Agency Team Meeting**
 - Regional agencies/stewardship



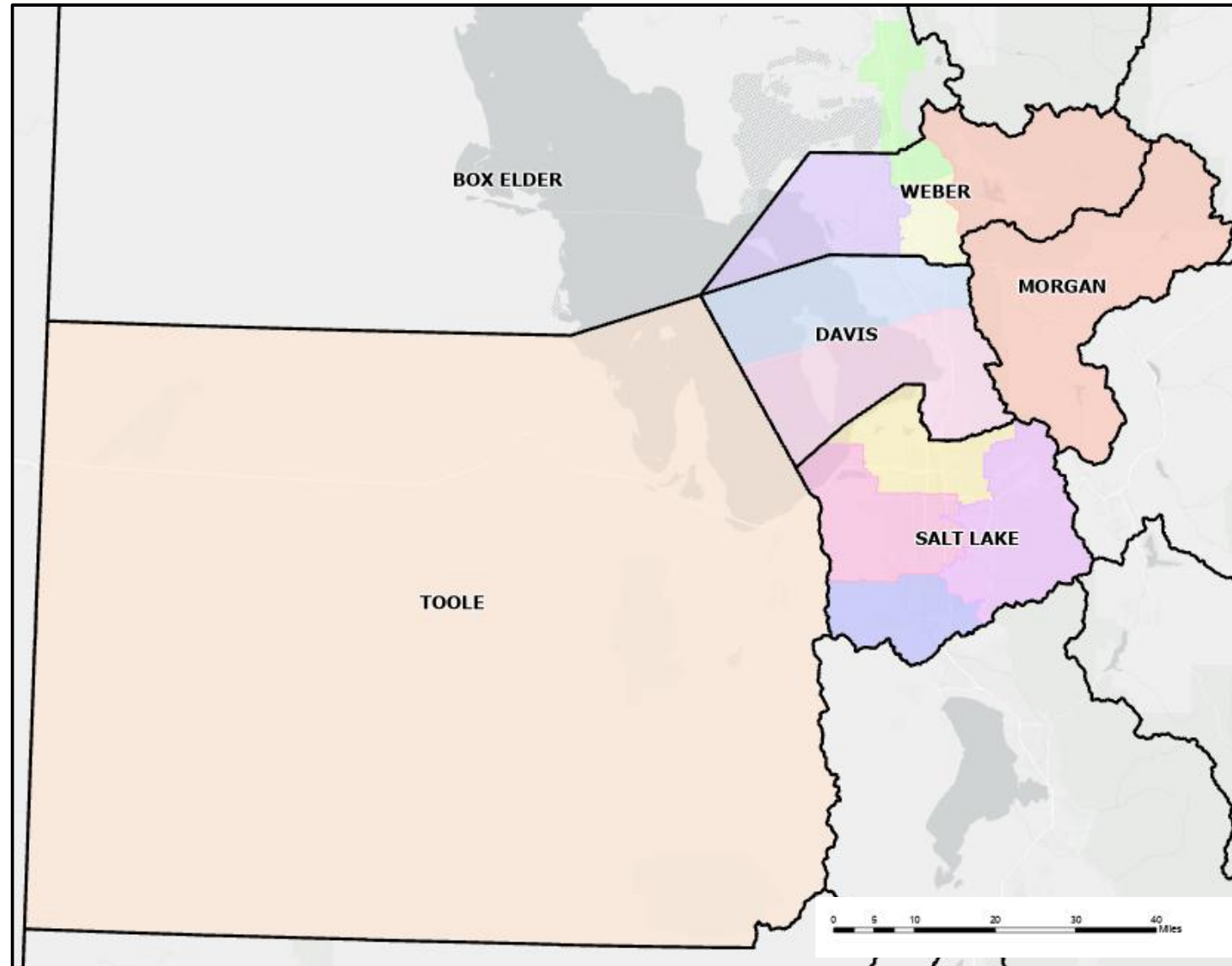
SS4A Steering Team

1. Kip Billings, WFRC
2. Wayne Bennion , WFRC
3. Dan Bergenthal, Salt Lake City
4. Daniel Gillies, Ogden
5. Jeff Lewis, UDOT Traffic and Safety
6. David Rodgers, Salt Lake County
7. Matt Shipp, Cottonwood Heights
8. Britney Ward, Sandy
9. Sheldon Shaw, UTA
10. Jared Stewart, Tooele City
11. Ali Avery, City of North Salt Lake

Geographic Focus Area Safety Planning Teams

1. Box Elder/North Weber
2. Morgan/Huntsville
3. Central Weber Co.
4. West Weber Co.
5. North Davis Co.
6. South Davis Co.
7. Salt Lake City
8. West Salt Lake Valley
9. South Salt Lake Valley
10. East Salt Lake Valley
11. Tooele Co.

GFA Safety Planning Teams



Legend

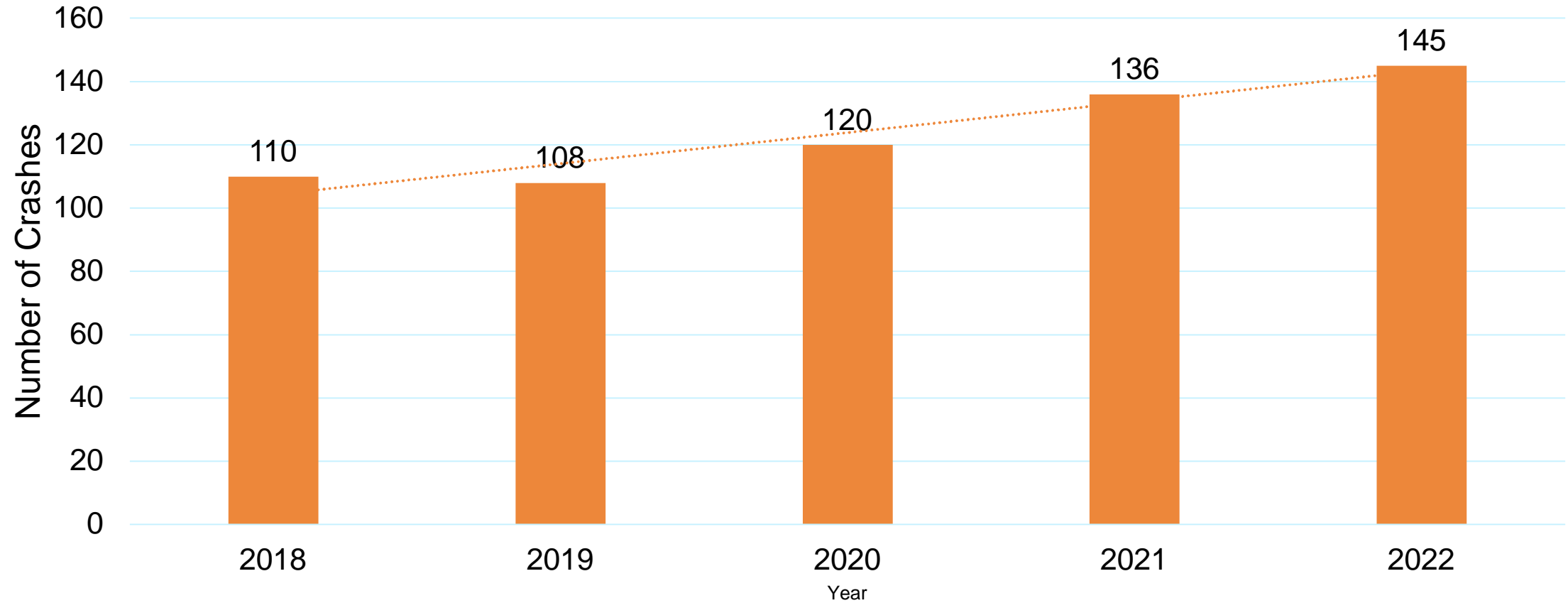
County Boundaries

GFA Boundaries

- | | |
|-------------------------------------|--|
| Central Weber County | South Box Elder/
North Weber County |
| East Salt Lake Valley | South Davis County |
| East Weber County/
Morgan County | South Salt Lake Valley |
| North Davis County | Tooele County |
| Salt Lake City | West Salt Lake Valley |
| | West Weber County |

WFRC Safety Overview

Annual Fatal Crashes*



*IN WFRC AREA

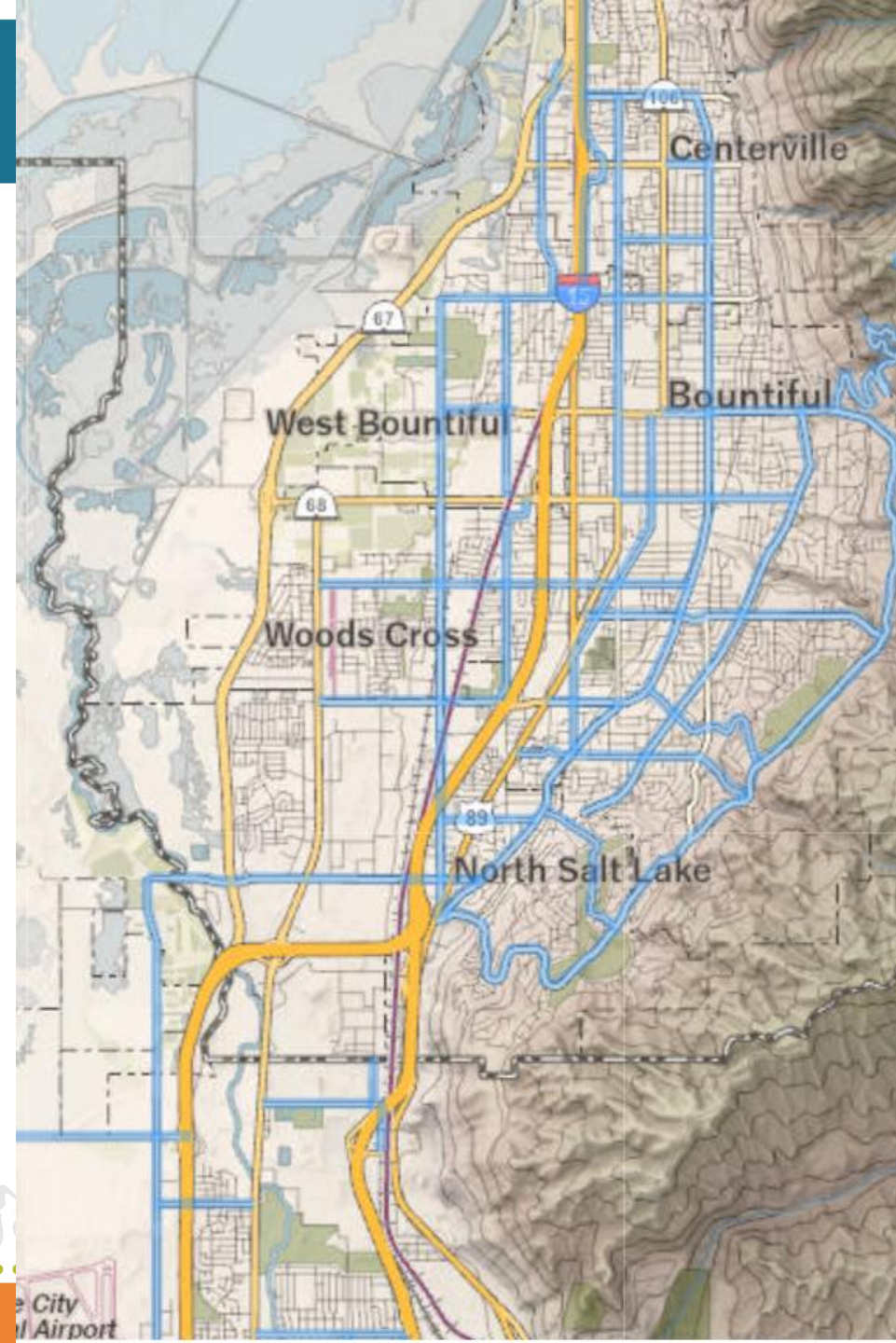
Salt Lake Co, Davis Co, Weber Co., Morgan Co., Tooele, Co., southern Box Elder Co.

WFRC Safety Overview

State Route: Roadways owned, operated, and maintained by UDOT

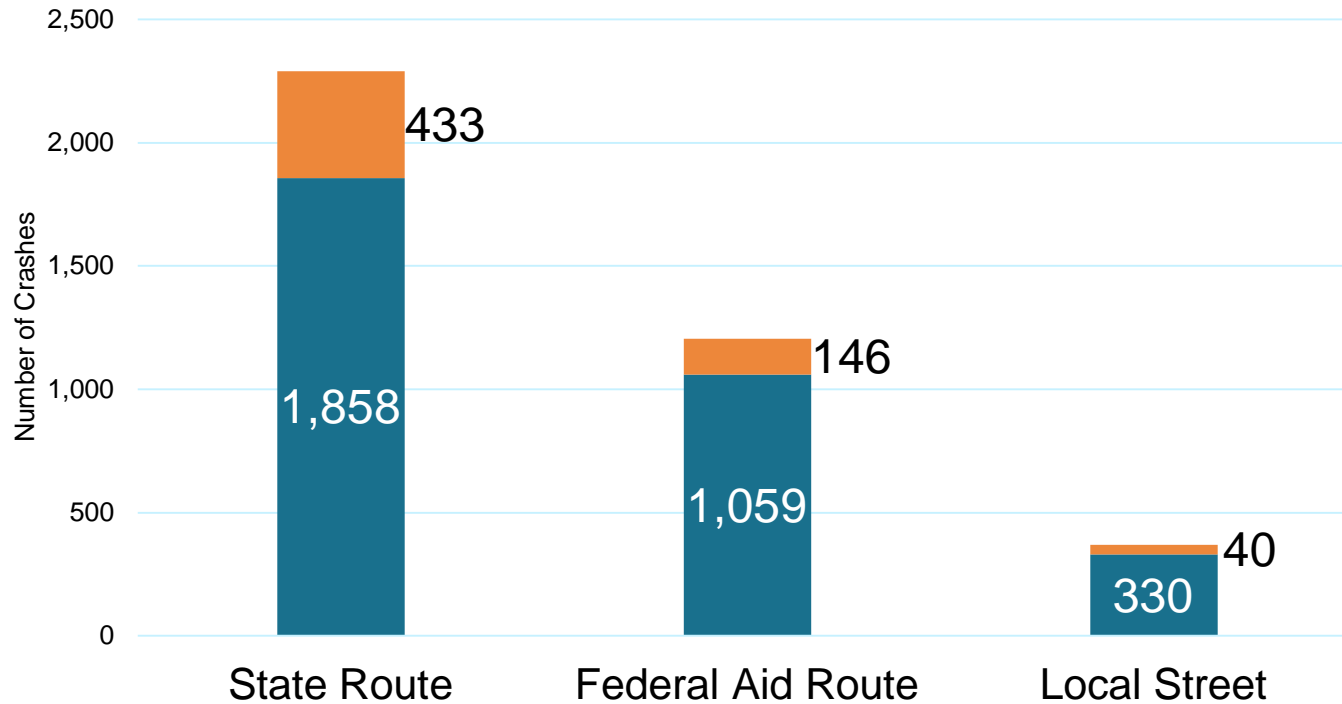
Federal-Aid Route: Non-UDOT roadways eligible for federal funding – typically minor arterials and collectors

Local Route: Other non-UDOT roadways, primarily collectors and residential streets



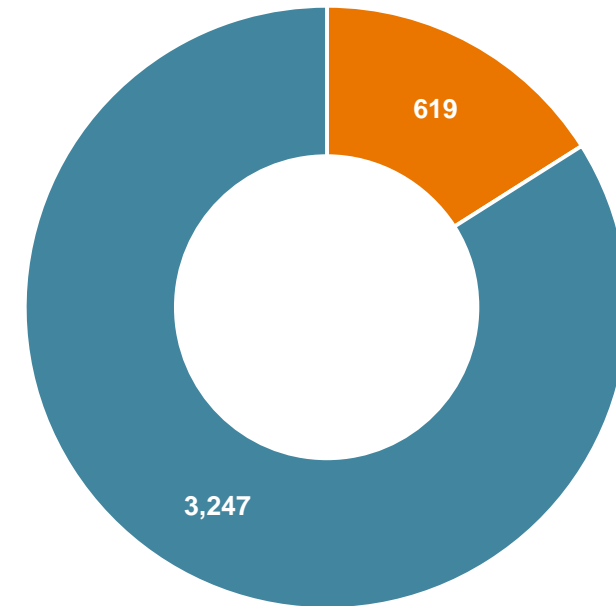
WFRC Safety Overview

Crashes by Route Type*



■ Suspected Serious Injury Crashes ■ Fatal Crashes

Crashes by Severity*

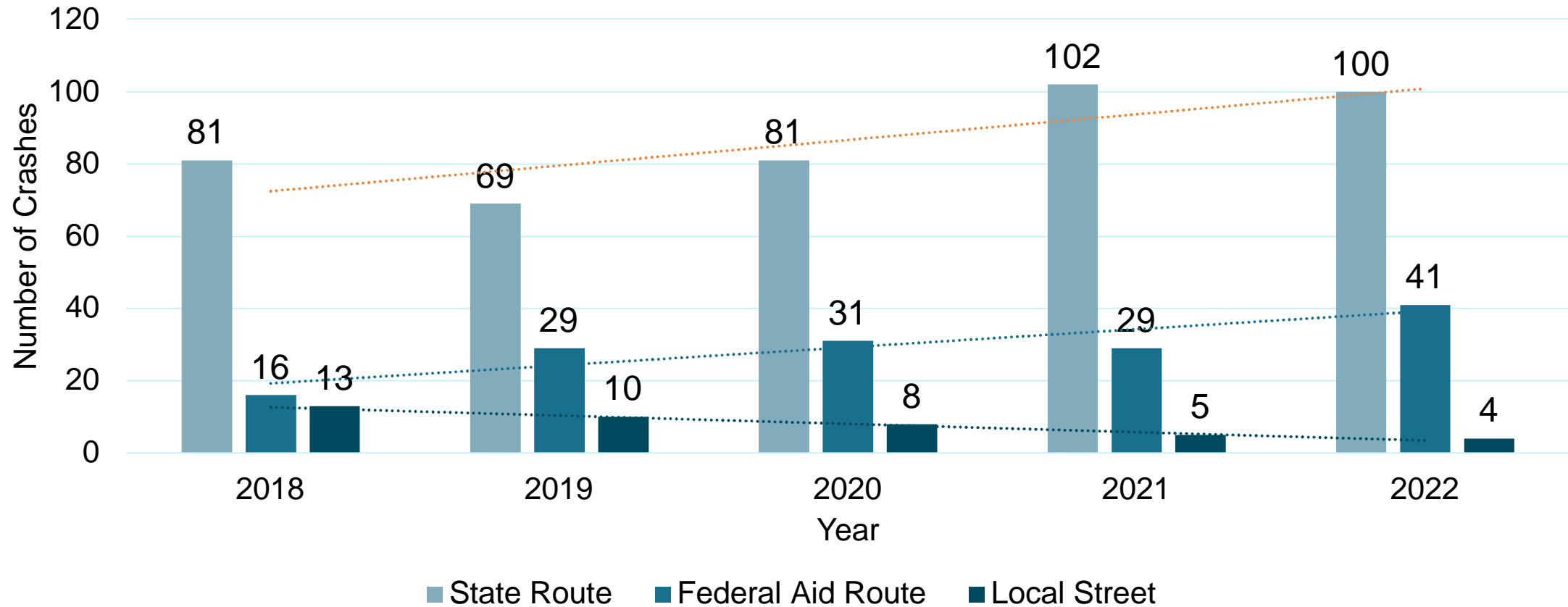


*IN WFRC AREA

Salt Lake Co, Davis Co, Weber Co., Morgan Co.,
Tooele, Co., southern Box Elder Co.

WFRC Safety Overview

Annual Fatal Crashes by Route Type*

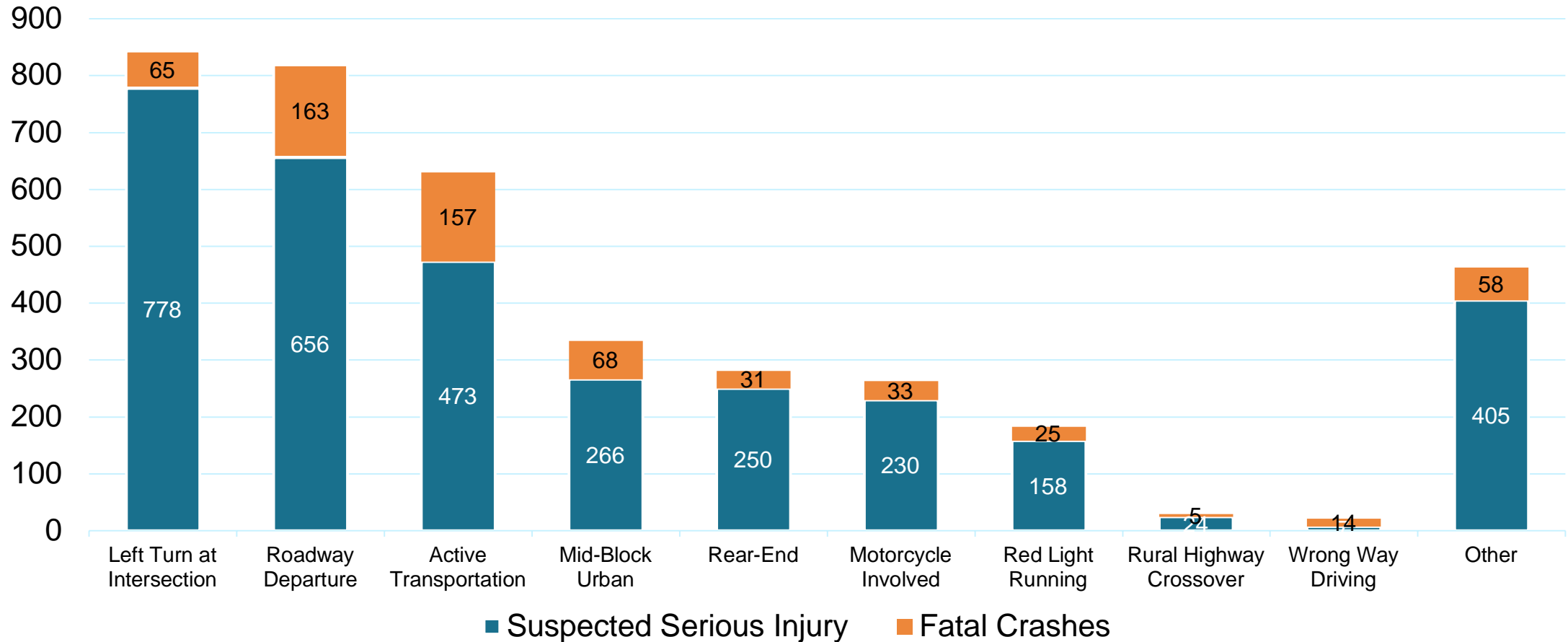


*IN WFRC AREA

Salt Lake Co, Davis Co, Weber Co., Morgan Co., Tooele, Co., southern Box Elder Co.

WFRC Safety Overview

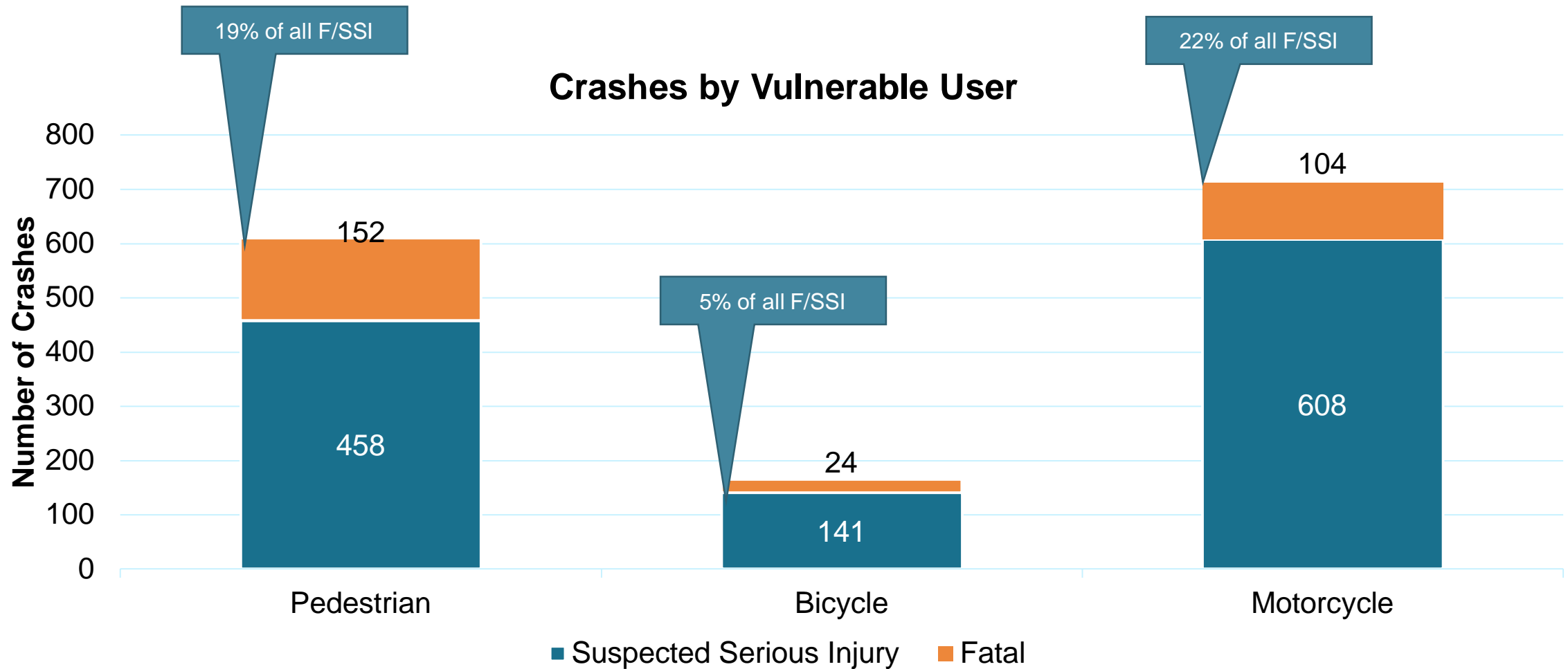
Crashes by Crash Type*



*IN WFRC AREA, ALL ROUTE TYPES

Salt Lake Co, Davis Co, Weber Co., Morgan Co., Tooele, Co., southern Box Elder Co.

WFRC Safety Overview



*ANNUAL FATAL AND SERIOUS INJURY CRASHES WITHIN WFRC AREA
Salt Lake Co, Davis Co, Weber Co., Morgan Co., Tooele, Co., southern Box Elder Co.

Safe System Approach

How does the
United States
reach zero deaths?



Source: Fehr & Peers

PARADIGM SHIFT



Transportation system design and operation should reduce crash severity and save lives by:

1. Anticipating human mistakes
2. Lessening impact forces

The Safe System approach aims to eliminate fatal and serious injuries for all road users by:

**Accommodating
human mistakes**

PARADIGM SHIFT ||



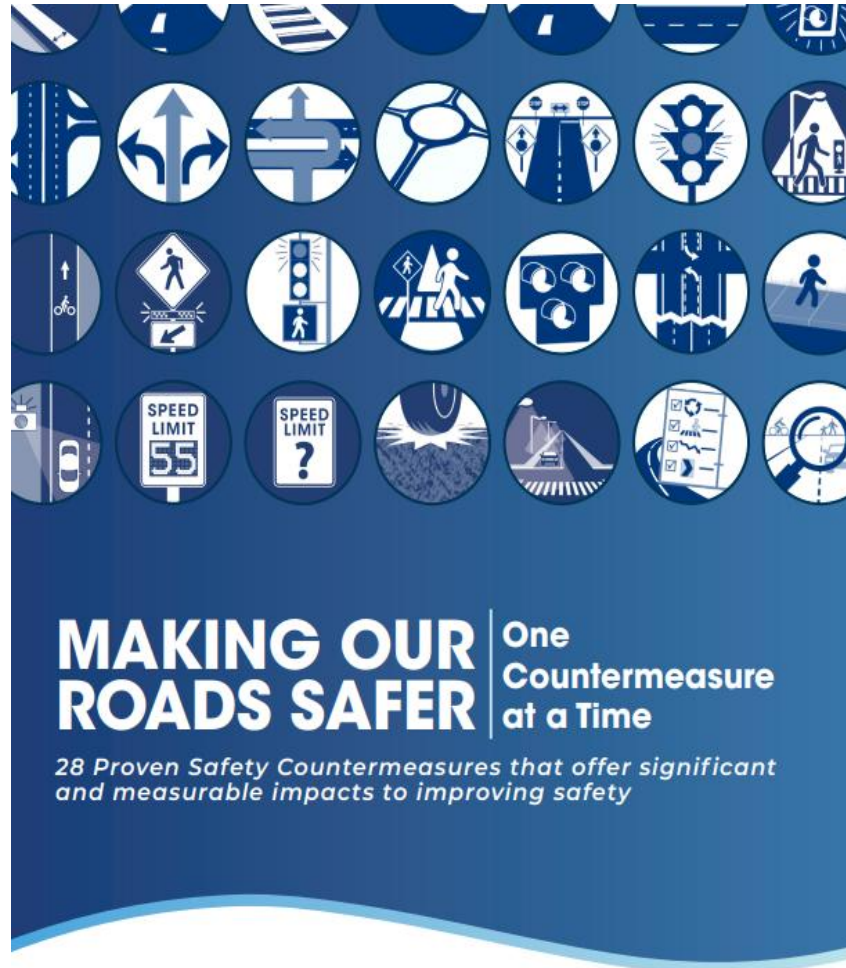
**Keeping impacts on the human
body at tolerable levels**



Safe System Approach



“Double-Down” on what works



Transportation agencies are strongly encouraged to consider widespread implementation of Proven Safety Countermeasures to accelerate the achievement of local, State, and National safety goals.

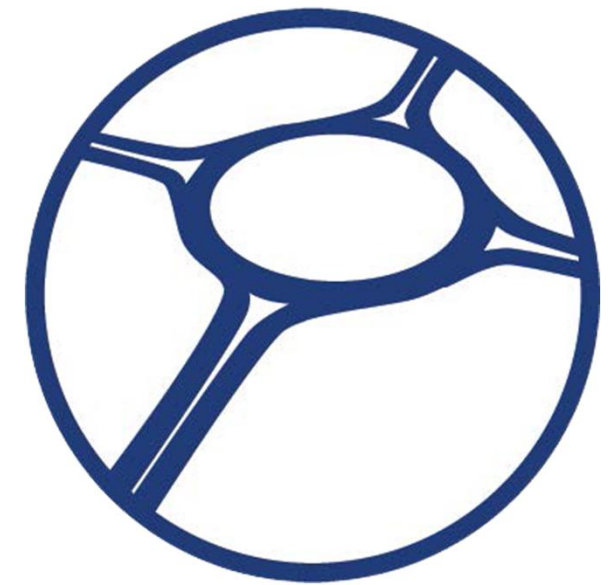
Proven Safety Countermeasures



APPROPRIATE SPEED
LIMITS



MEDIAN AND
PEDESTRIAN REFUGE
ISLANDS



ROUNABOUTS



Where are We on the Safe System Journey?

Traditional approach

Prevent crashes →

Improve human behavior →

Control speeding →

Individuals are responsible →

React based on crash history →

Safe System approach

Prevent death and serious injuries

Design for human mistakes/limitations

Reduce system kinetic energy

Share responsibility

Proactively identify and address risks



Safe System Approach

Implementing the Safe System approach is our shared responsibility,
and we all have a role.



Next Steps

- Complete Safety Analysis
- Assemble GFA Safety Planning Team Members
 - City engineers, planners
 - City managers
 - Elected officials
 - Law enforcement
 - Emergency services
 - Community organizations
- Conduct GFA Planning Team Meetings (October 2023)



What can you do to prepare?

Participate in a GFA Meeting (October 2023)

- Review High Crash Locations
- Review High Risk Locations
- Provide input on potential strategies
- Identify critical safety projects in your jurisdiction

Begin a dialogue with elected officials

- Prepare to support Regional Safety Commitment Resolution
- Prepare for local match (20%) requirements

Provide comments at our project website



Project website

www.wfrcsafetyplan.org



Questions?

