









July 12, 2023

# Wasatch Front Area Comprehensive Safety Action Plan



-  Introductions
-  Safety Streets and Roads for All (SS4A) Program
-  Comprehensive Safety Action Plan (CSAP) Scope and Schedule
-  Geographic Focus Areas / Safety Planning Teams
-  Steering Team
-  Safety Launch Regional Virtual Kick-Off



# Introductions

Wasatch Front Regional Council

Kimley-Horn

Fehr & Peers

Penna Powers



# Safe Streets and Roads for All (SS4A)

- Bipartisan Infrastructure Law (BIL) established the Safe Streets and Roads for All (SS4A) discretionary program
- \$5 billion in appropriated funds over 5 years, 2022-2026
- SS4A funds regional, local, and Tribal initiatives through grants to prevent roadway deaths and serious injuries
- SS4A program supports the USDOT National Roadway Safety Strategy and goal of zero roadway deaths



# Safe Streets and Roads for All (SS4A)

## Eligible applicants:

- Counties, cities, towns, transit agencies, and other special districts that are political subdivisions of a State.
- Metropolitan planning organizations (MPOs)
- Federally recognized Tribal governments

## Grant Types:

- **Planning and Demonstration Grants**
- Implementation Grants



## Planning and Demonstration Grants

1. Leadership Commitment and Goal Setting
2. Planning Structure
3. Safety Analysis
4. Engagement and Collaboration
5. Equity Considerations
6. Policy and Process Changes
7. Strategy and Project Selections
8. Progress and Transparency

SS4A certification requires #3 (Safety Analysis) and #7 (Strategy and Project Selections), and four of the remaining requirements



# Self-Certification Checklist

## Complete ALL of the Following:

- Analysis of existing conditions and historical trends
  - Baseline for fatalities and serious injuries
- Analysis of crashes by location, severity, and contribution factor
- Analysis of systemic and specific safety needs
- Geospatial identification of higher risk locations (maps)
- Identify a comprehensive set of projects and strategies to address the safety problems with timeframes and prioritization criteria
- Plan finalized by June 2024

# Self-Certification Checklist

## Complete at least 4 of the 6

### 1. Commitment

- Officials and/or governing body publicly commit to a zero fatalities and serious injury
- Commitment includes a target date to reach zero of targets to achieve significant reductions in fatalities and serious injuries

### 2. Plan Development

- Was a committee or task force established and charged with the plan's development, implementation, and monitoring?

### 3. Development Activities

- Engagement with public and relevant stakeholders including private sector and community groups
- Incorporation of engagement information received
- Inter- and intra-governmental cooperation and collaboration



# Self-Certification Checklist

## Complete at least 4 of the 6

### 4. Equity

- Consideration of equity using inclusive and representative processes
- Identification of underserved communities through data
- Equity analysis focused on initial equity impact assessment of project and strategies

### 5. Policies, Plans, Guidelines, and/or Standards

- Includes an assessment of current policies, plans, guidelines, and/or standards to identify opportunities to improve safety prioritization
- Discussion of implementation through updated or new policies, guidelines, and/or standards

### 6. Progress and Transparency

- Description on how progress will be measured over time
  - Plan is posted publicly online
- 



# CSAP Overview





# Project Background

## Purpose:

- Develop a holistic strategy to reduce roadway fatalities and serious injuries in the Wasatch Front region on locally-owned (cities, towns, counties) roadways

## CSAP will:

- Analyze safety needs
- Identify high-risk locations and factors contributing to crashes
- Prioritize strategies to address them



# CSAP Overview

June - Sept. 2023	Oct. 2023	Nov. 2023 - Jan 2024	Feb. 2024	May - June 2024	July 2024
<b>Safety Launch</b>	<b>Geographic Focus Area Safety Team Planning Team Meetings #1</b>	<b>Strategy and Project Selection</b>	<b>Geographic Focus Area Safety Team Planning Team Meetings #2</b>	<b>Draft and Final CSAP</b>	<b>WFRC Presentations</b>
<b>Safety Analysis</b>				<b>Leadership Commitment</b>	
	<b>SS4A Regional Workshop</b>				
	<b>Safety Commitment Resolution</b>				
<b>Engagement and Collaboration, Committee Meetings</b>					





# Study Area

- Salt Lake County
- Davis County
- Weber County
- Morgan County
- Tooele County
- Southern portion of Box Elder County (Brigham City)



# Task 1: Project Management

- Monitor scope, schedule, and budget
- Communicate with WFRC Project Manager regarding project status and action items.
- Bi-weekly PMT meetings



# Task 2: Planning Structure

- CSAP Steering Team
  - Monthly meetings
- Geographic Focus Area (GFA) Safety Planning Teams
  - Two Rounds of GFA Planning Team Meetings
  - 11 meetings each round



# Task 2: Planning Structure

## SS4A Steering Team

1. Kip Billings, WFRC
2. Wayne Bennion , WFRC
3. Dan Bergenthal, Salt Lake City
4. Daniel Gillies, Ogden
5. Jeff Lewis, UDOT Traffic and Safety
6. David Rodgers, Salt Lake County
7. Matt Shipp, Cottonwood Heights
8. Britney Ward, Sandy

## Geographic Focus Area Safety Planning Teams

1. Box Elder/North Weber
2. Morgan/Huntsville
3. Central Weber Co.
4. West Weber Co.
5. North Davis Co.
6. South Davis Co.
7. Salt Lake City
8. West Salt Lake Valley
9. South Salt Lake Valley
10. East Salt Lake Valley
11. Tooele Co.



# Task 3: Leadership and Goals

- Engage stakeholders to inform Safety Commitment Resolution

<ul style="list-style-type: none"><li>• Steering Team</li><li>• GFA Planning Teams</li><li>• Elected officials</li><li>• UDOT</li><li>• UTA</li><li>• UHP</li></ul>	<ul style="list-style-type: none"><li>• Emergency Responders</li><li>• School Districts</li><li>• Community organizations</li><li>• Advocacy organizations</li><li>• County Health Depts</li><li>• Unified Police</li></ul>
---	---

- Safety Launch Kick-Off Meeting (one-hour virtual meeting)
- Online Survey/Comment Form
- WFRC Committee Presentations
- Regional Safety Workshop



# Task 4: Safety Analysis

- Analyze existing data and trends; identify risk factors, high-risk locations, potential systemic improvements
- Safety analysis (prepared by GFA)
  - Crash Tree diagrams
  - usRAP risk rating analysis
  - Highway Safety Manual (HSM) analysis
- GFA Planning Team Meetings (Round #1)



# Task 5: Engagement

- Engage stakeholders to provide input to plan development
- Disadvantaged Community Stakeholder Meetings



# Task 6: Equity Considerations

- Develop equity index, evaluate equity in safety data analysis (Task 3) and recommended strategies (Task 8)
- Identify concentrations of disadvantaged or vulnerable populations using two methods:
  - Available WFRC tools for a locally-unique equity index
  - USDOT Equitable Transportation Community Explorer tool and CEQ Climate and Environmental Justice Screening tool





# Task 7: Policy/Process Changes

- Review agency policies, programs, and practices that may impact safety and identify opportunities for changes
- Identify emphasis or topic areas that may be addressed
- Recommend potential engineering, enforcement, or education policies or practices



# Task 8: Strategy and Project Type

- Recommend and prioritize strategies and project types
- Identify potential strategies and countermeasures to reduce fatalities and serious injuries
- GFA Planning Team Meetings (Round #2)



# Task 9: CSAP Report

- Prepare CSAP Report and deliverables
- Regional Safety Workshop
- Safety Commitment Resolution
- WFRC Committee Presentations



# Task 10: Progress/Transparency

- Prepare performance measures and reporting plan to document progress toward CSAP implementation





# Deliverables Summary

- Tech Memo: Safety Analysis Summary
- Tech Memo: GFA High-Risk Locations and Potential Countermeasures
- Tech Memo: Community Engagement Summary
- Tech Memo: Recommended Policy and Process Changes
- Draft and Final CSAP Report
  - Projects/Strategies
  - Equity Analysis
  - CSAP Performance Reporting Framework



# Schedule Milestones

Notice to Proceed: July 1, 2023

Safety Launch: August 22, 2023

GFA Safety Planning Team #1: October-November 2023

Identify Projects/Strategies: January 2024

Dis-advantaged Community Stakeholder Meetings: February 2024

GFA Safety Planning Team #2: February 2024

Draft Final Report: May 2024

Regional Safety Workshop: June 2024

Final Report: July 2024



# GFA Safety Planning Teams

South Box Elder/North Weber County

East Weber County/Morgan County

West Weber County

Central Weber County

North Davis County

South Davis County

Salt Lake City

East Salt Lake Valley

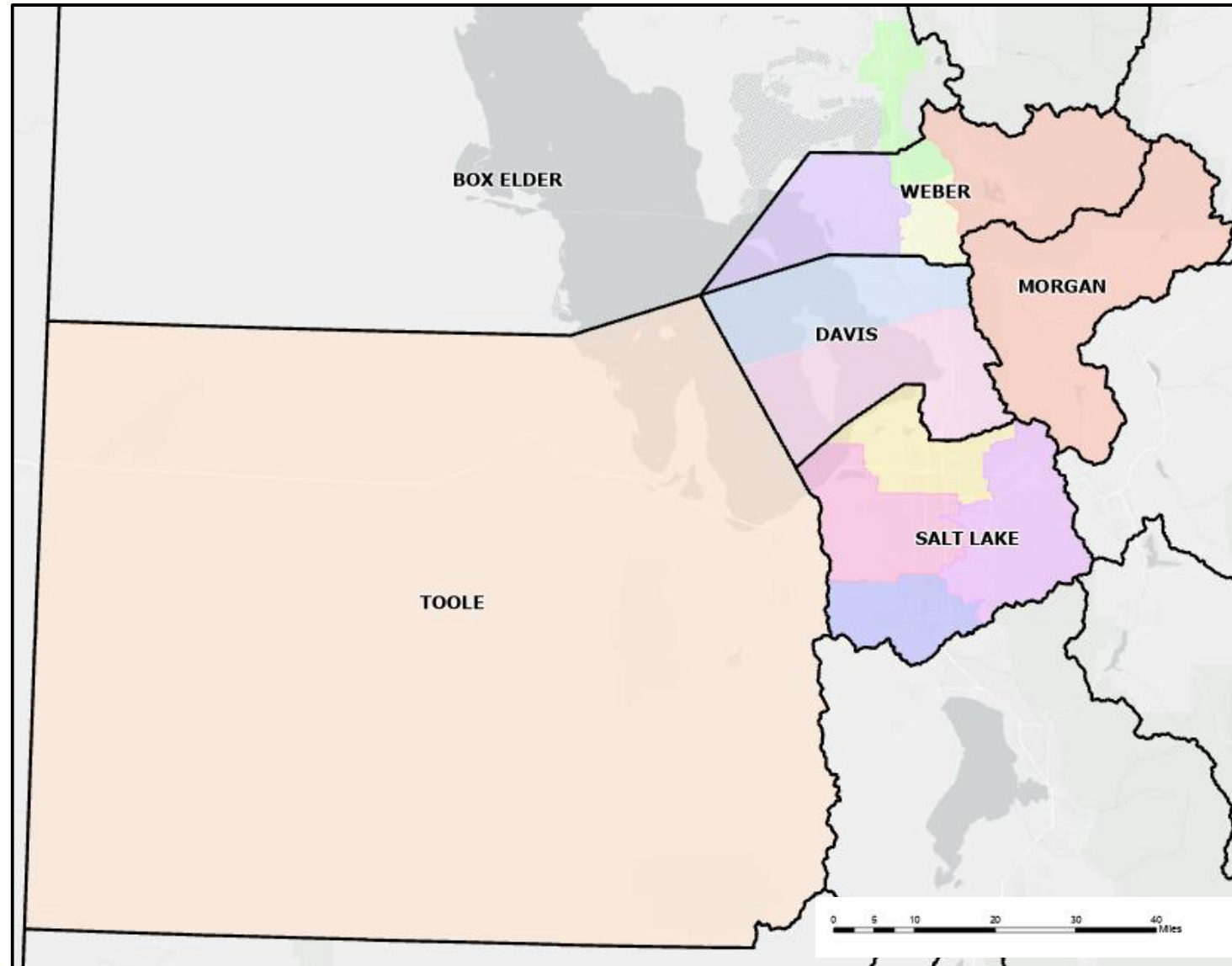
West Salt Lake Valley

South Salt Lake Valley

Tooele County



# GFA Safety Planning Teams



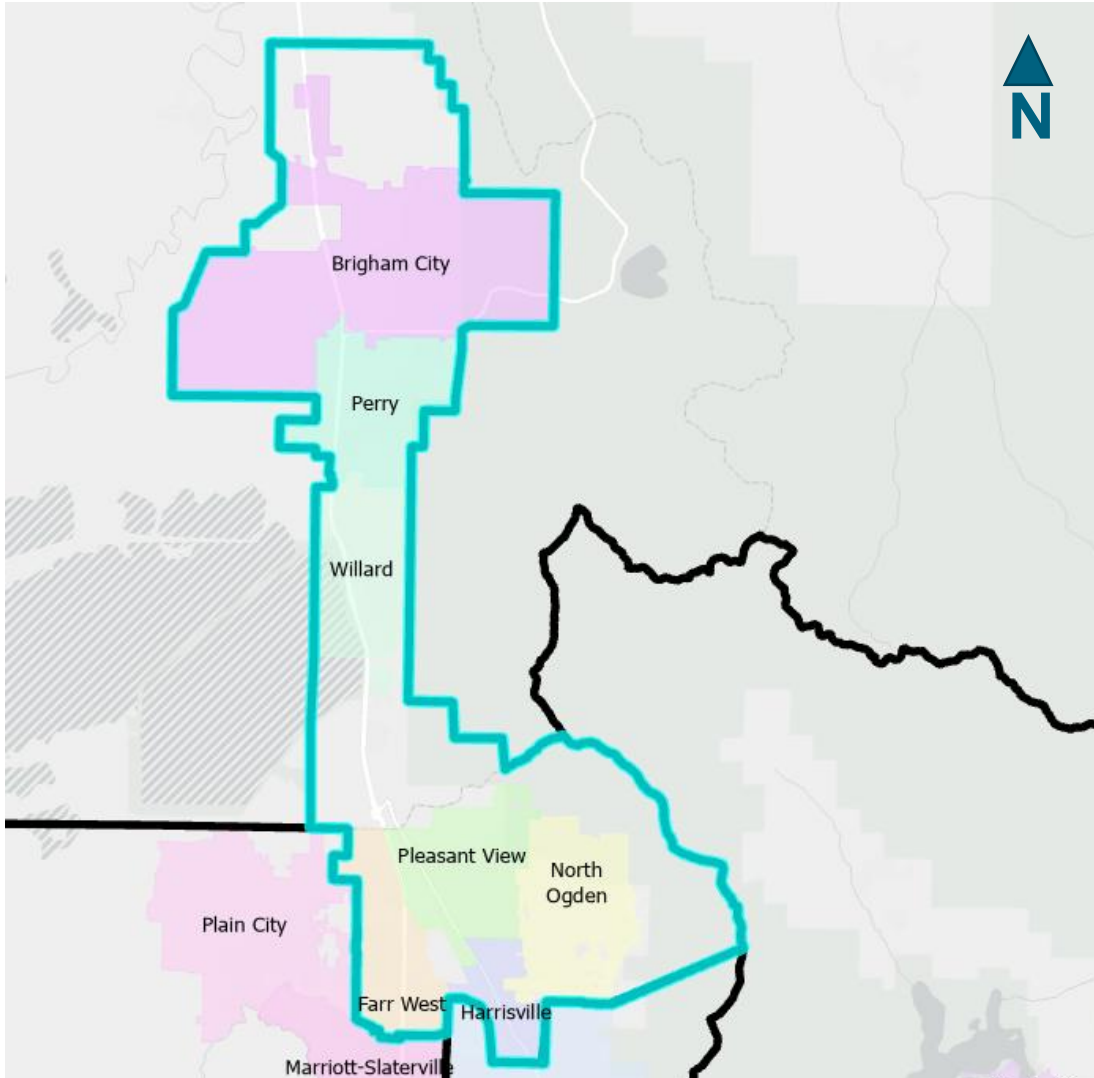
## Legend

County Boundaries

### GFA Boundaries

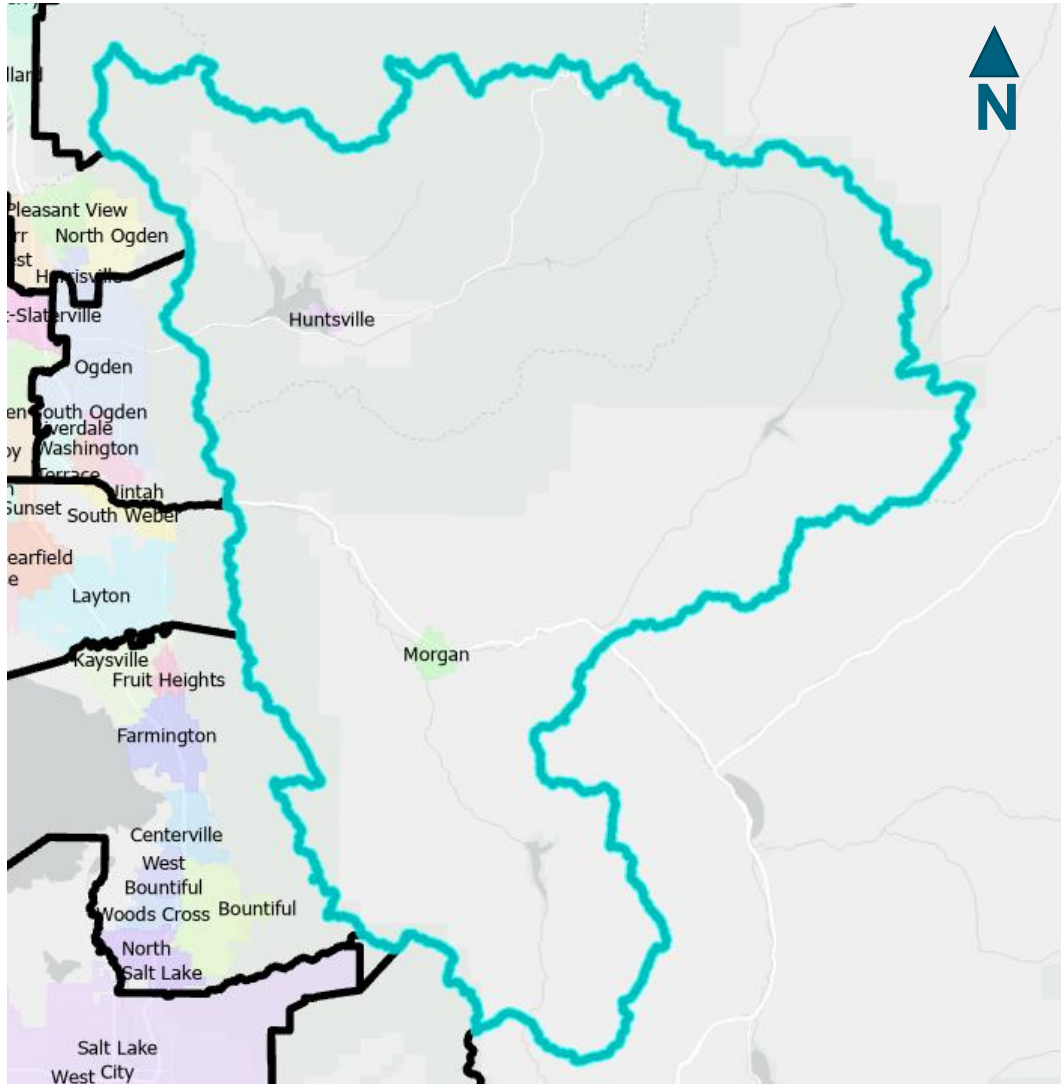
- |                                     |  |
|-------------------------------------|--|
| Central Weber County                | South Box Elder/<br>North Weber County |
| East Salt Lake Valley               | South Davis County                     |
| East Weber County/<br>Morgan County | South Salt Lake Valley                 |
| North Davis County                  | Tooele County                          |
| Salt Lake City                      | West Salt Lake Valley                  |
|                                     | West Weber County                      |

# South Box Elder/North Weber County



- Brigham City
- Perry
- Willard
- Farr West
- Harrisville
- North Ogden
- Pleasant View

# East Weber County/Morgan County

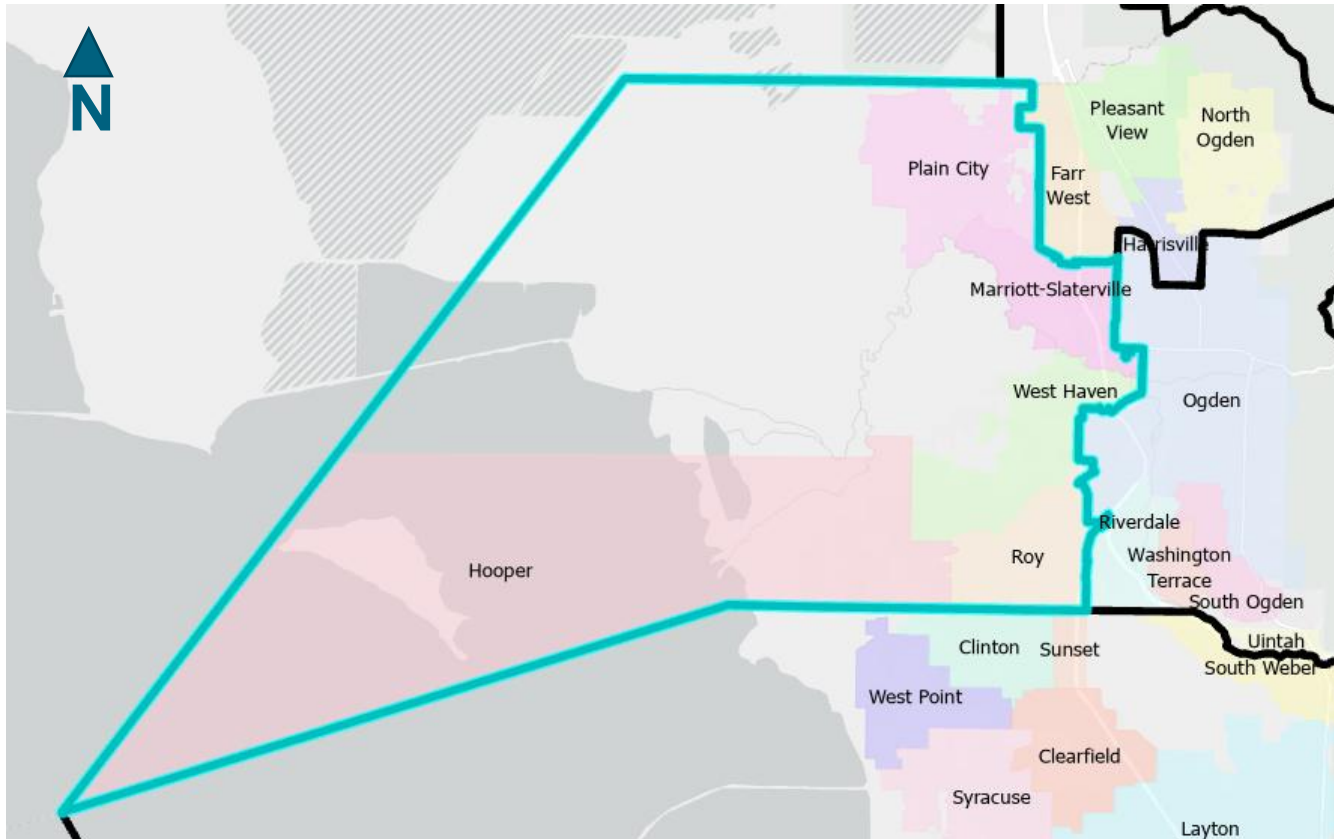


- Morgan
- Huntsville



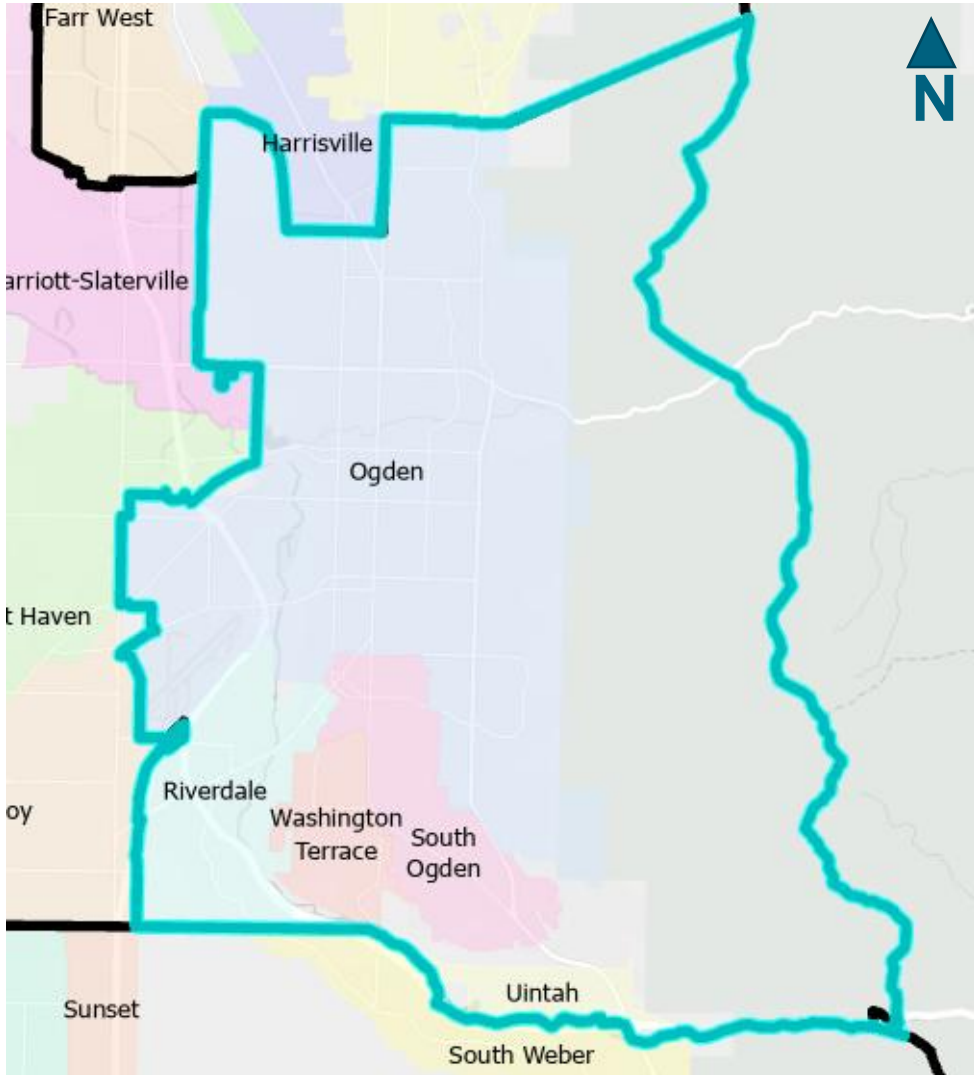


# West Weber County



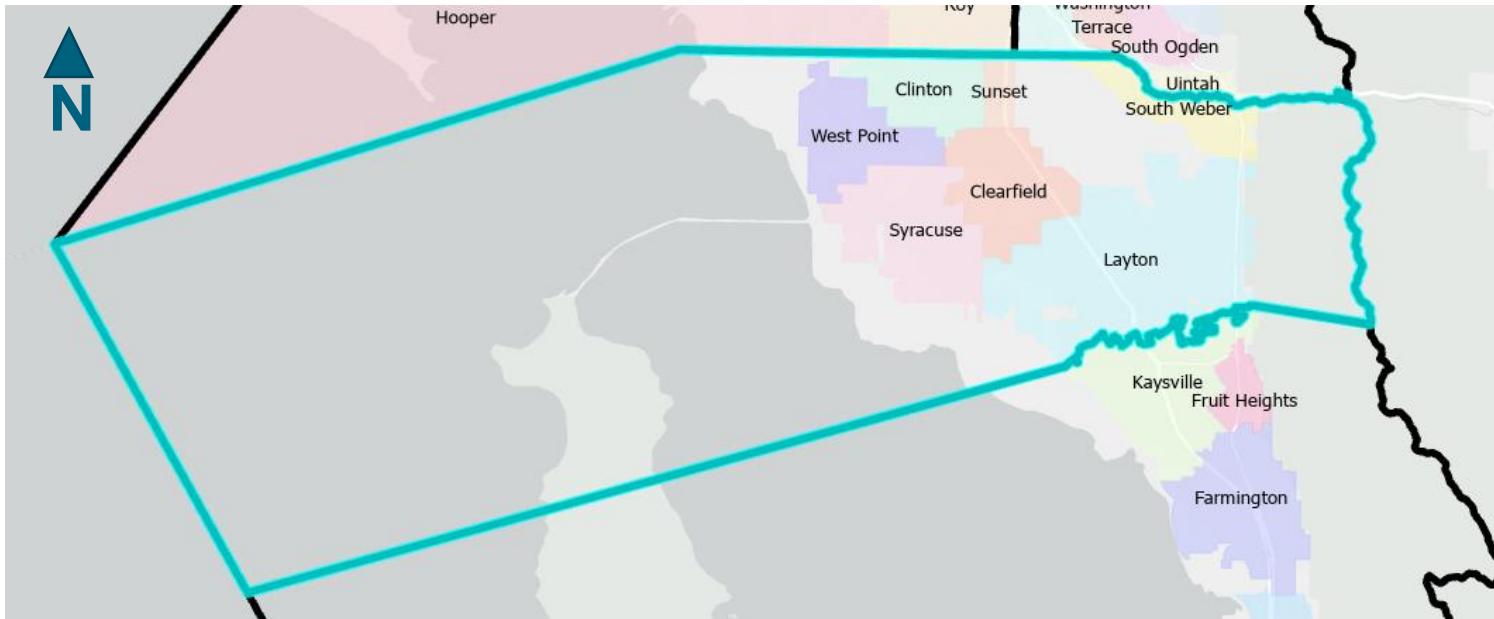
- Hooper
- Marriott-Slaterville
- Plain City
- Roy
- West Haven

# Central Weber County



- Ogden
- Riverdale
- South Ogden
- Uintah
- Washington Terrace

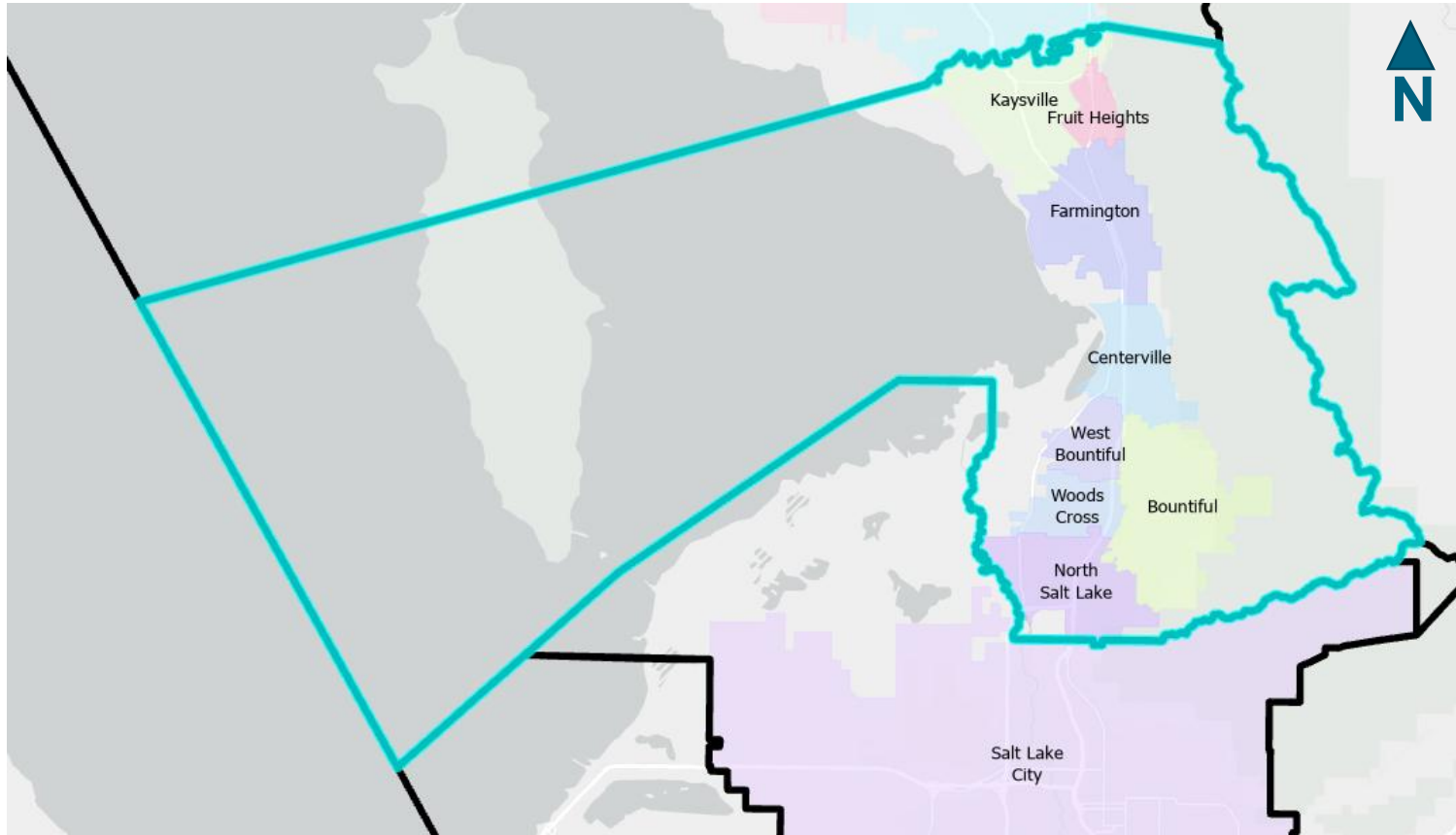
# North Davis County



- Clearfield
- Clinton
- Layton
- South Weber
- Sunset
- Syracuse
- West Point

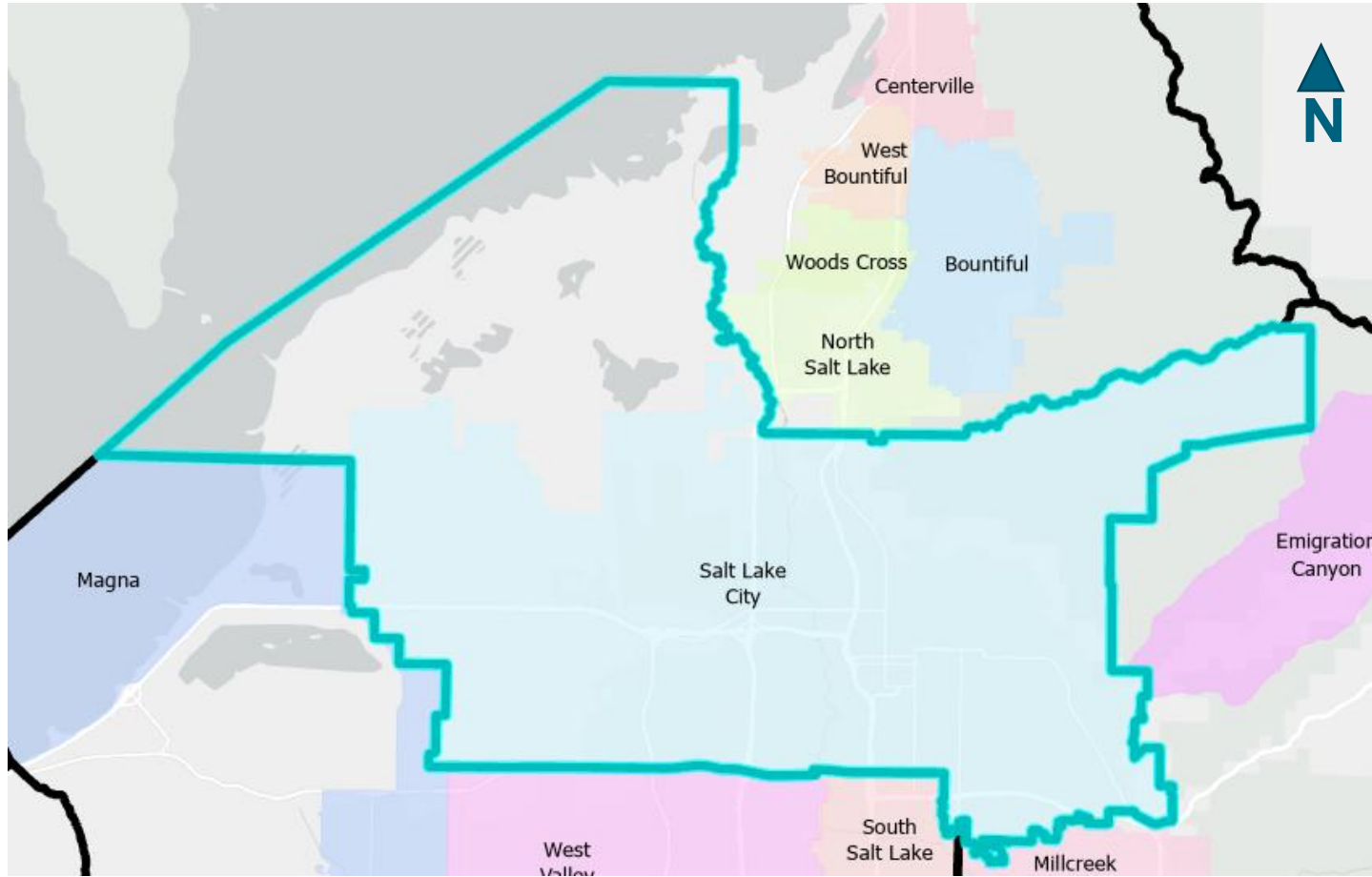


# South Davis County



- Bountiful
- Centerville
- Farmington
- Fruit Heights
- Kaysville
- North Salt Lake
- West Bountiful
- Woods Cross

# Salt Lake City

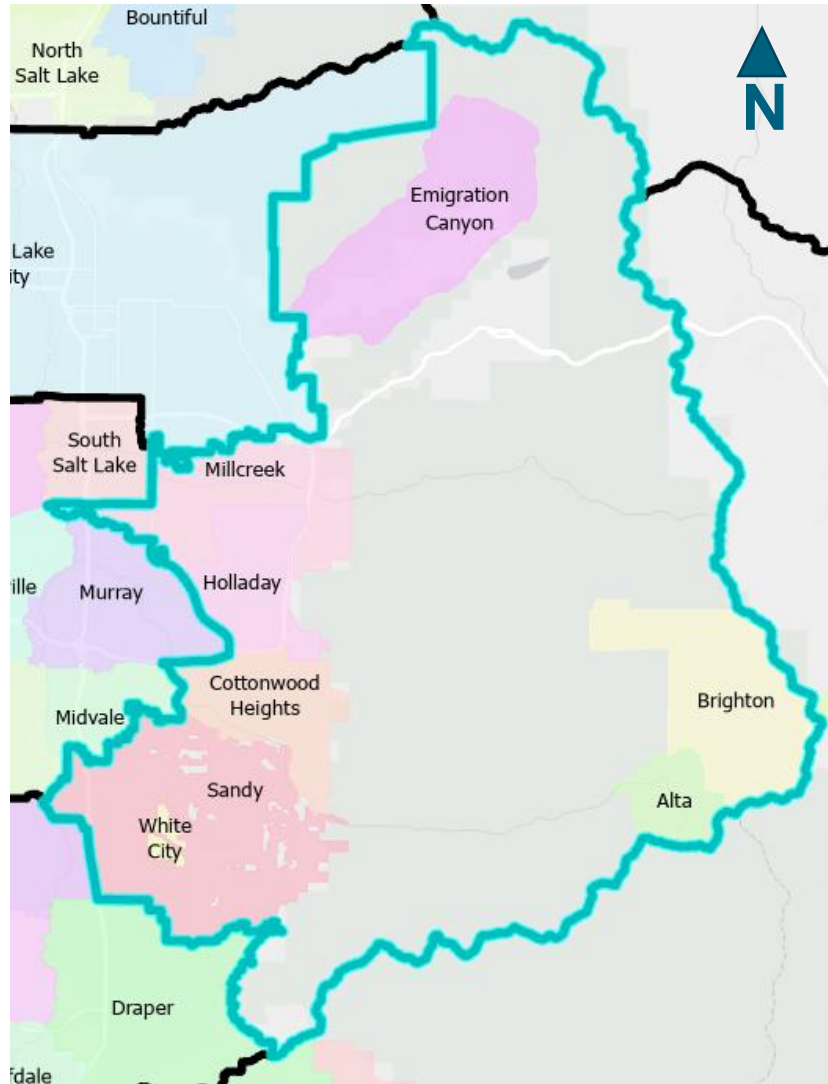


- Salt Lake City





# East Salt Lake Valley



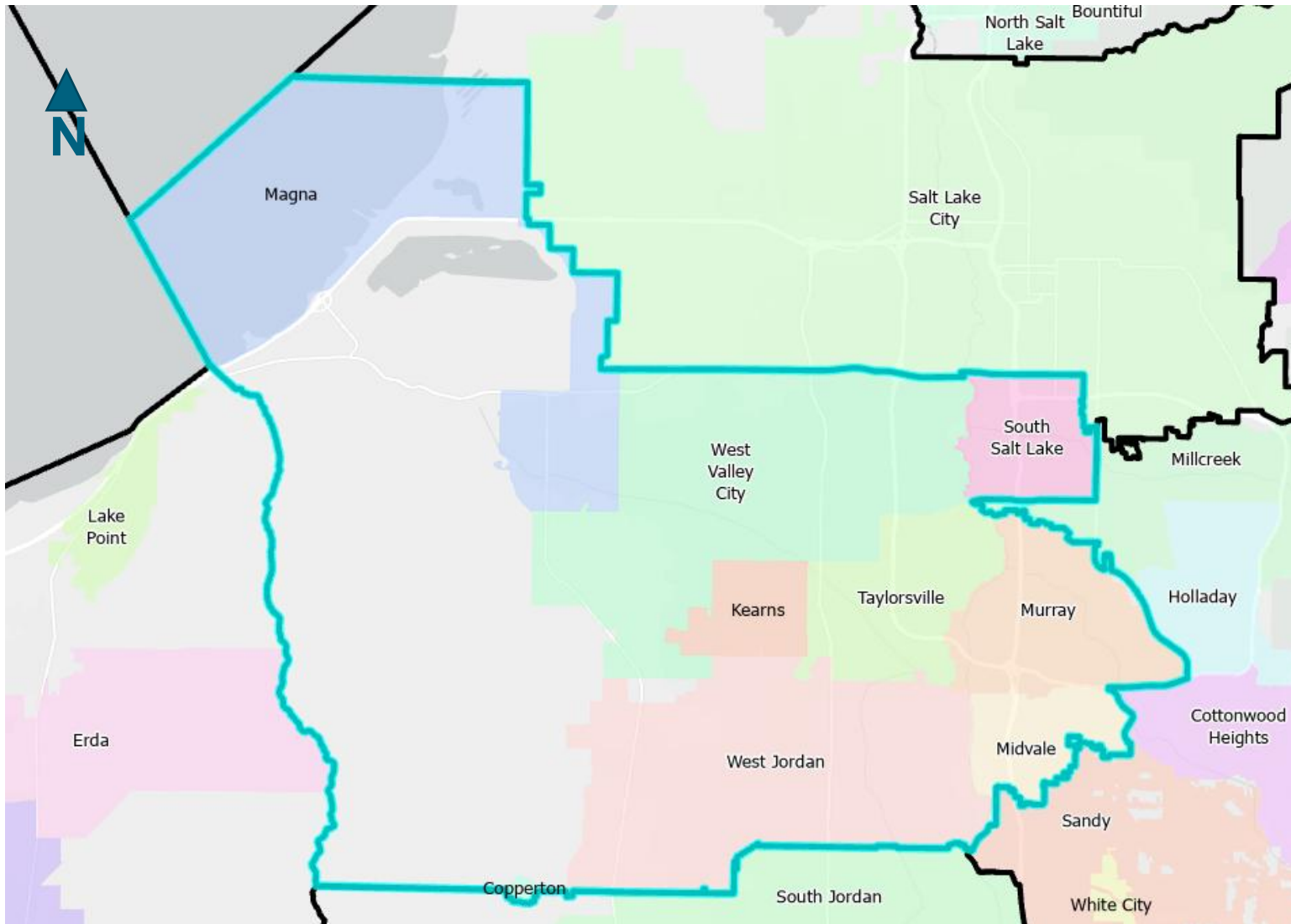
- Alta
- Brighton
- Cottonwood Heights
- Holladay
- Millcreek
- Sandy
- White City\*
- Emigration\*

\*Township





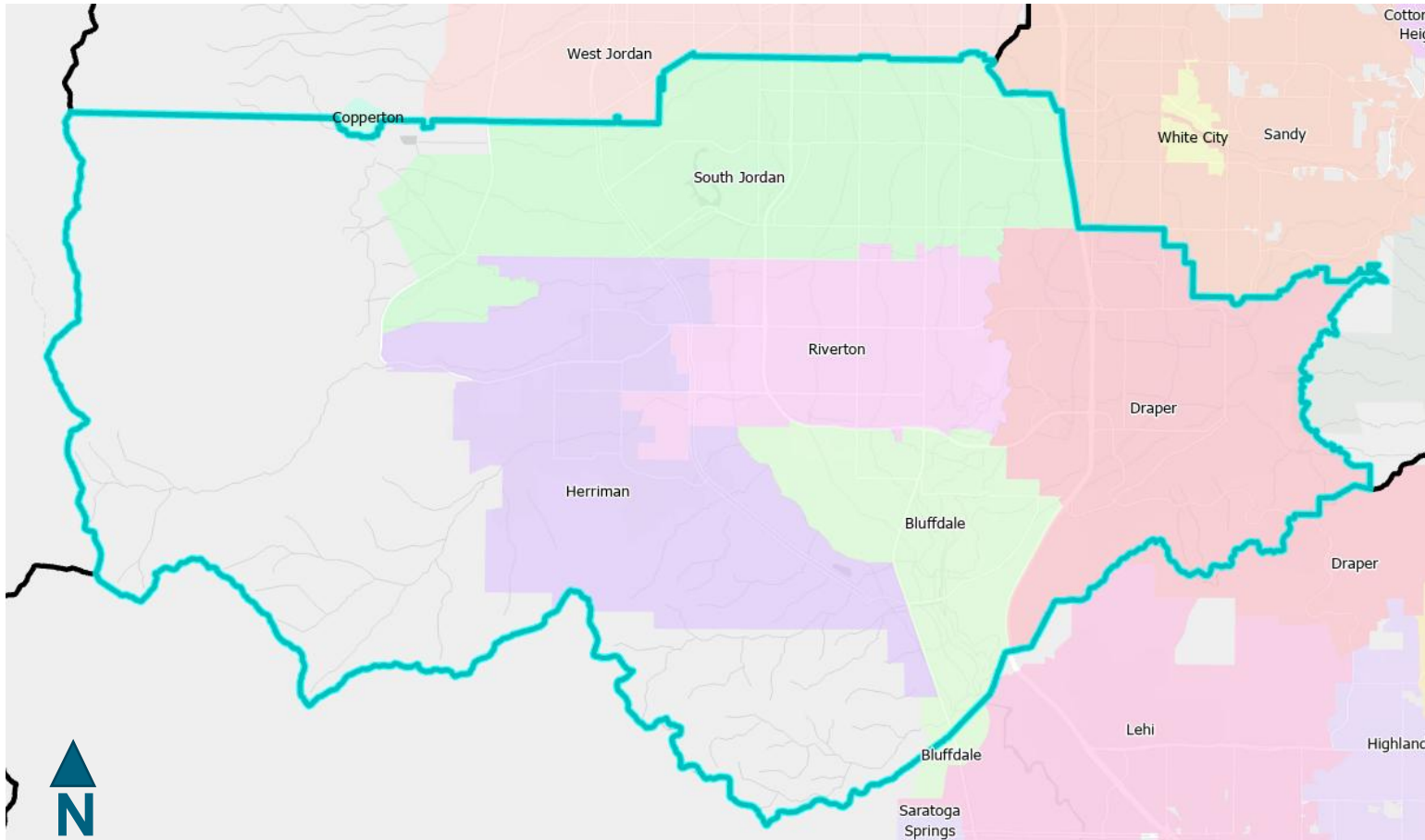
# West Salt Lake Valley



- Midvale
- Murray
- South Salt Lake
- Taylorsville
- West Jordan
- West Valley City
- Kearns\*
- Magna\*
- Copperton\*

\*Township

# South Salt Lake Valley



- Bluffdale
- Draper
- Herriman
- Riverton
- South Jordan



# Tooele County



- Erda
- Grantsville
- Lake Point
- Rush Valley
- Stockton
- Tooele
- Vernon
- Wendover



# Next Steps

Data Collection

Assemble Safety Launch Contact List

Assemble GFA Safety Planning Team Members

City engineers, planners

City managers

Elected officials

Law enforcement

Emergency services

Community organizations

Safety Launch – August 22, 2023





# Questions and Discussion

